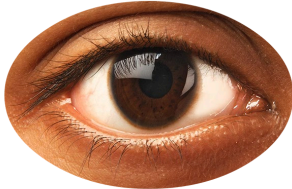


## Easy Eye Care

**A service for people with learning disabilities and autistic people**



People with learning disabilities over 14 years old should have an Annual Health Check every year.



At your Annual Health Check, the nurse or doctor should ask about your eyes.



They might ask you when your last eye test was.



You should have an eye test every year with your optician.



South East London has a service called Easy Eye Care.



Easy Eye Care is for people with learning disabilities and autistic people.



It is for people of all ages.



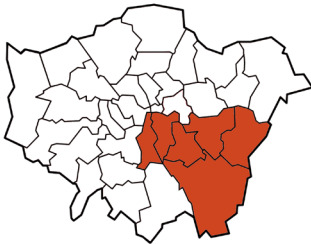
You will get a longer appointment to meet your needs.



You don't have to be able to read or speak to have an eye test.



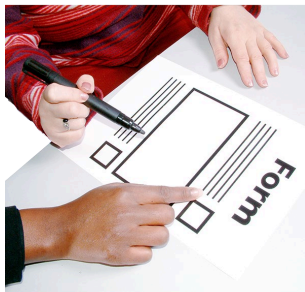
Some people will get help with the cost of an eye test or glasses.



The Easy Eye Care service is in Lambeth, Lewisham, Southwark, Bexley, Bromley and Greenwich.



You can choose your optician on this website:  
[www.sel-mecs.com/learning-disabilities](http://www.sel-mecs.com/learning-disabilities)



You will be asked to fill in this 'About Me And My Eyes' form before your appointment:  
[www.seeability.org/myeyes](http://www.seeability.org/myeyes)



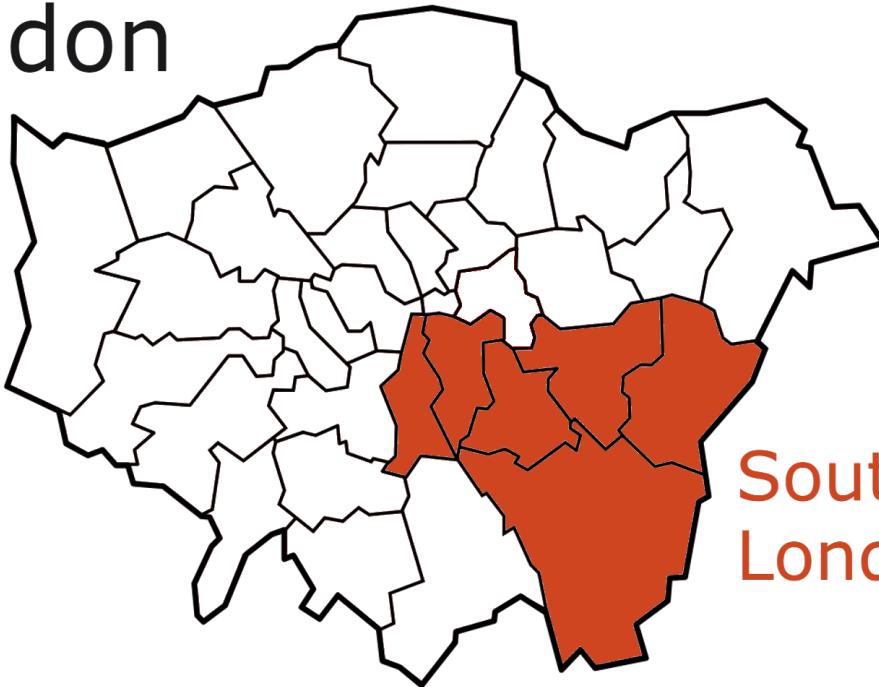
You will be given an 'Eye test results form after your appointment:  
[www.seeability.org/eyetest-results](http://www.seeability.org/eyetest-results)



For more information about  
Easy Eye Care, please call  
020 3859 2385.

Easy Eye Care Service in South East London:

London



South East  
London

SeeAbility is the operating name of the Royal School for the Blind founded in 1799. Registered charity number 255913.

[Seeability.org](http://Seeability.org)

Some Photosymbols used [photosymbols.com](http://photosymbols.com).